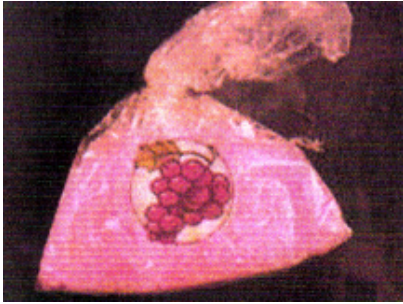


Hoax alert circulating on strawberry-flavoured crystal meth or 'strawberry quick'

14 November 2007

DrugScope has reason to believe that a memo on the appearance of strawberry-flavoured crystal meth is currently circulating in the UK.

The picture below is often attached to the memo, along with the description of a scenario in which this drug is offered to children in school playgrounds. The drug is nicknamed 'strawberry quick' or 'candy'.



We firmly believe that the information circulating on strawberry quick or strawberry-flavoured crystal meth is a hoax.

We believe the hoax originated in the United States. Examples of the memo that we have seen use American terms like schoolyard, candy and emergency department rather than British terminology (playground, sweets or A&E, for example).

The police are working hard to mitigate the threat posed by methamphetamine and currently it remains comparatively rare in the UK. At DrugScope, we have seen no evidence to suggest that 'strawberry-flavoured crystal meth' is circulating in this country.

We understand that most people who forward this information on to others do so with the best of intentions. Unfortunately it can cause unnecessary concern and so we would advise that the email should not be forwarded on. You can email us at info@drugscope.org.uk for advice and assistance on verifying information on strawberry quick or other drug information that you believe may be dubious.

For more information please contact Ruth Goldsmith in the DrugScope Press Office on 020 7940 7517 (07736 895563 out of hours) or at press@drugscope.org.uk